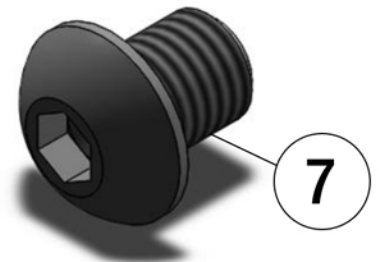
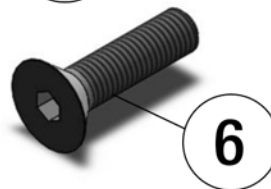
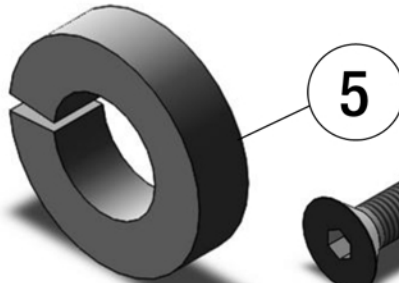
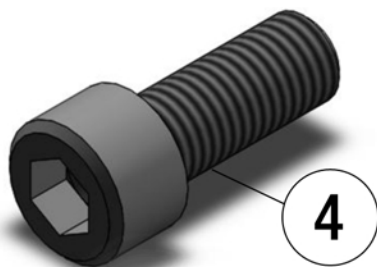
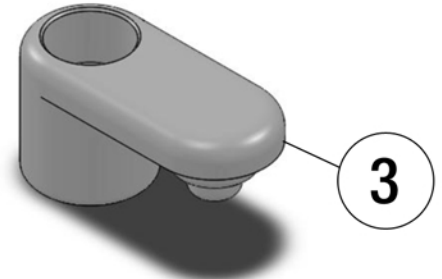
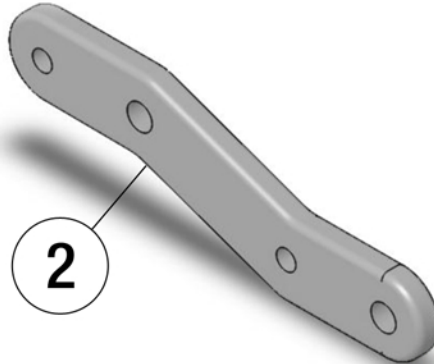
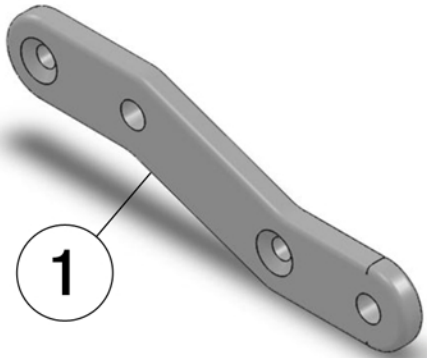




WHAT'S IN THE BOX			
ITEM NO.	PART NO.	DESCRIPTION	QTY
1	9000-001	COVER BRACKET LH	1
2	9000-002	COVER BRACKET RH	1
3	9000-003	FENDER RISER PIN	6
4	3101-017	10 MM Socket Head	4
5	3101-018	1/8" Washer	4
6	3101-019	10-32 Flat Head Allen S/S	4
7	3101-020	5/16-18 Button Head Allen Chrome	4



TOOLS REQUIRED	
A	10 mm Wrench
B	13 mm Socket
C	17 mm Socket
D	6 mm Allen
E	8 mm Allen
F	1/8" Allen

# Install Instruction

## Step 1

From Caliper Cover,  
Remove Bottom Corner  
Bolt first using a 10 mm  
Wrench, and then remove  
the 2 Chrome Nuts using  
13mm Socket, and set the  
Covers aside



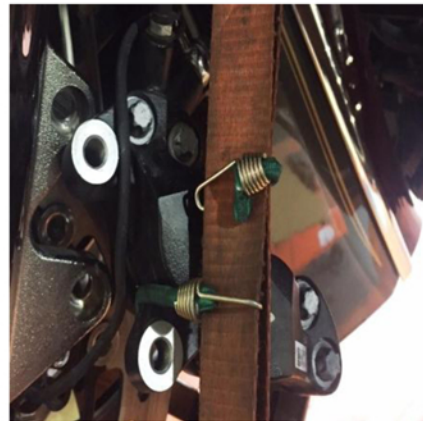
## Step 2

Remove the 2 caliper  
bolts from both sides  
using 17mm Socket



## Step 3

Remove calipers from the  
rotors and strap them to  
the side



## Step 4

2 People required  
One person hold the  
fender the other remove  
the 3 fender bolts using  
6mm Allen from both  
sides



### Step 5

2 People required, one person raise the fender other person using stock bolt, install all 6 fender risers with factory hardware snug by hand, and then tighten them all down to factory specs



### Step 6

Fender Raised, Remove the Factory Wheel and Install the New 21" Wheel to factory Specs



### Step 7

Bolt the Caliper back on with Supplied New Hardware using 8 mm Allen and tighten to Factory Specs



### Step 8

Install Flat Brackets using 1/8 Allen Tool



### Step 9

Install the Caliper Covers, First install the bottom corner factory bolt, then using new bolts (supplied) attach cover to the flat brackets

